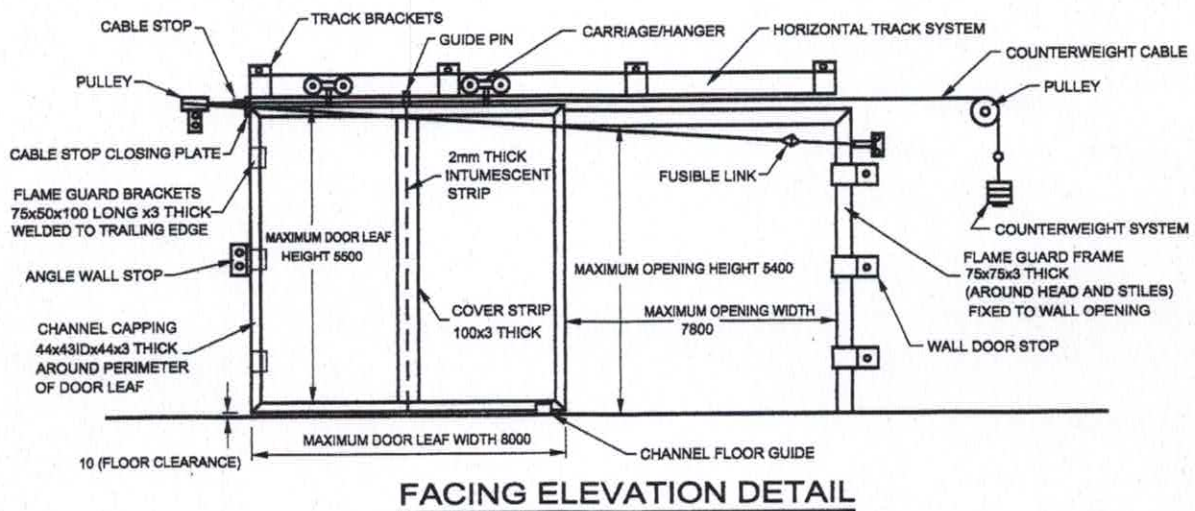
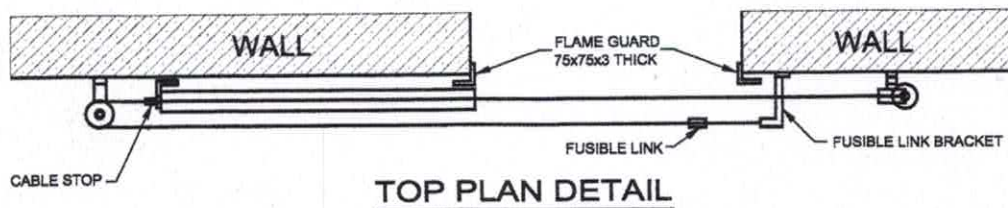


TVC-CORE SLIDING FIRE DOORS

• TVC-Core Single Leaf Slider

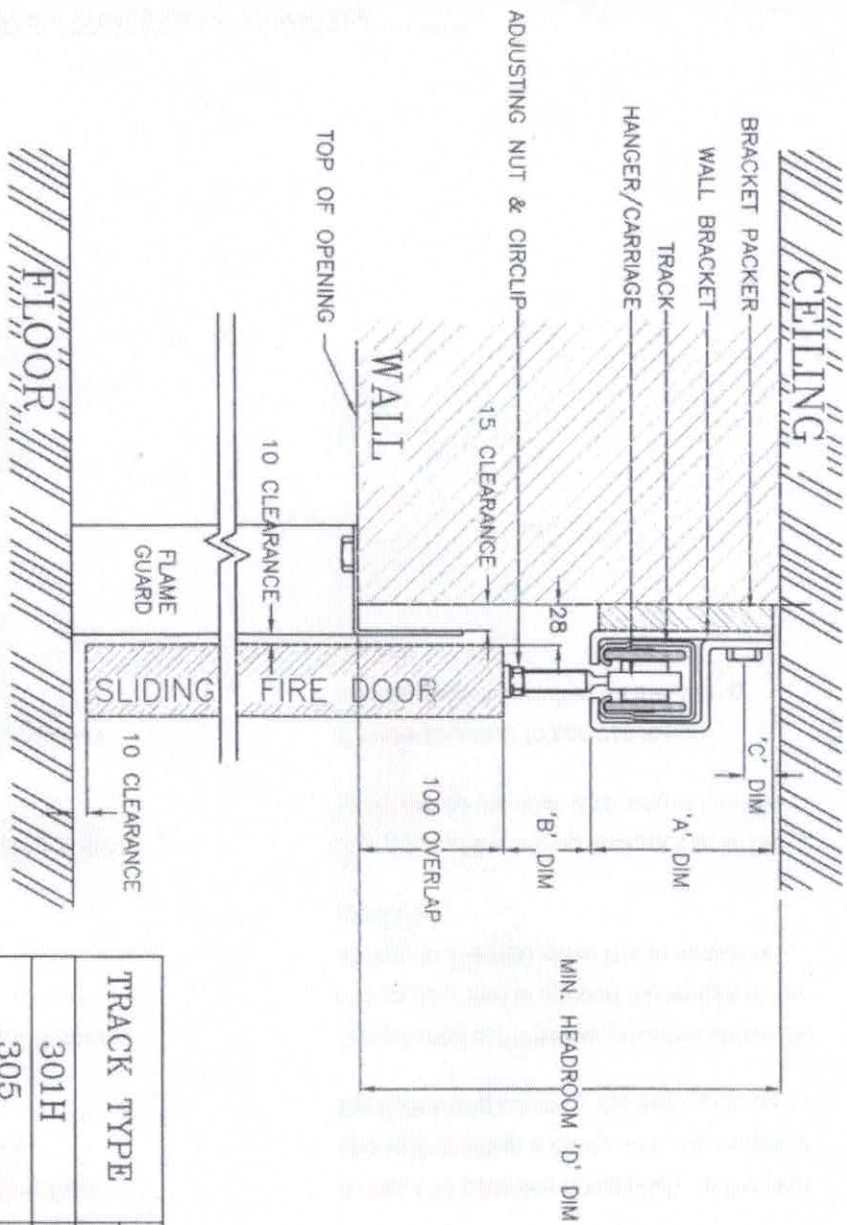


• NOTE

1. Door finished thickness nominal 50mm
2. Metal steel facing 1.0mm thick
3. The door leaf must overlap the opening by minimum 100mm at the head and each side
4. Flameguard and flameguard brackets must be installed on the trailing edge of the door leaf
5. Heavy duty wall stops and floor guide must be installed
6. Complies with AS 1905.1

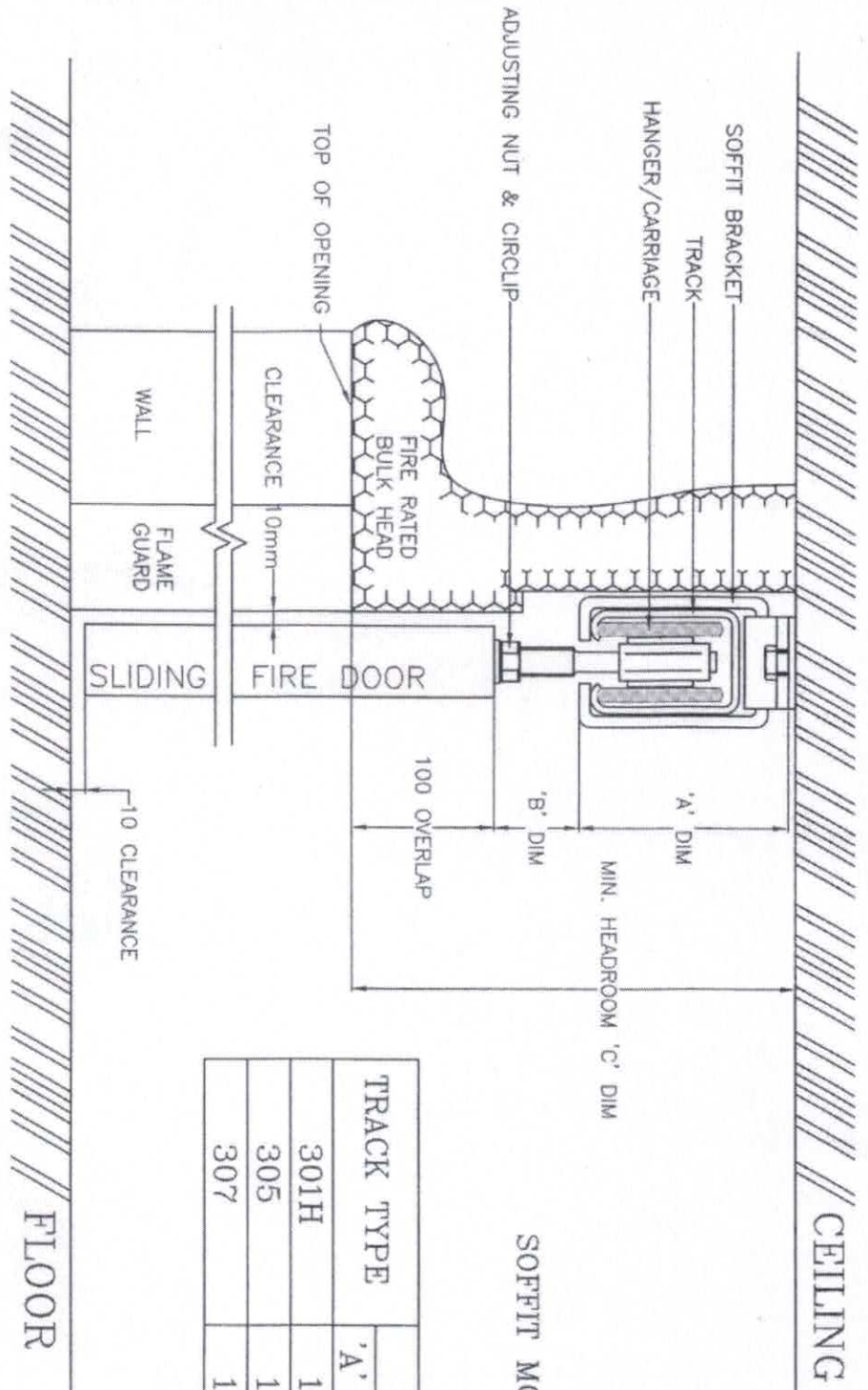
• AVAILABLE

Maximum Door Leaf Size (H x W) (mm)	Type of Wall	Facing	Fire Resistance Level (FRL)	Reference
5500 x 8000	Masonry	Metal Steel Sheet Faced	Up to NA/240/30	FSV1098 FSV1195 FCO2701 FCO2703



WALL MOUNTED HEAD DETAIL

TRACK TYPE	DIMENSION [mm]			
	'A' DIM	'B' DIM	'C' DIM	'D' DIM
301H	126	60	20	290
305	165	60	25	330
307	185	70	25	360



SOFFITT MOUNTED HEAD DETAIL

TRACK TYPE	DIMENSION [mm]			
	'A' DIM	'B' DIM	'C' DIM	'C' DIM
301H	101	60	265	265
305	133	60	300	300
307	150	70	325	325